



# **THE FULL REPORT**

**JUNE 2006**

# LYMINGE PARISH PLAN REPORT

## CONTENTS

	<b>Page No</b>
Introduction to Lyminge Parish Plan Report .....	3
Lyminge Parish Plan Report	
1. Aims .....	4
2. Parish Involvement .....	4
3. Lyminge Parish Plan Team and Acknowledgements .....	5
4. Why do we need a Parish Plan?.....	5
5. Methodology of the Plan.....	6
6. The Questionnaire .....	6
7. Keeping Residents Informed .....	6
8. Traffic Management, Road Safety and Parking .....	7
9. Highways Matters.....	9
10. Crime .....	11
11. Housing Development.....	12
12. Community Facilities.....	13
13. Business Development .....	14
14. Sports Facilities.....	14
15. Street Lighting.....	15
16. Radio & TV Reception.....	15
17. Mobile Telephones .....	15
18. Health, Social Services & Education .....	16
19. Environment .....	16
20. Parish Council Funding and Communications .....	17
21. Transport .....	19
Appendices Containing Statistical Information .....	21

# INTRODUCTION TO

## LYMINGE PARISH PLAN REPORT

Welcome to the Lyminge Parish Plan Report. In 2003 Lyminge Parish Council, inspired by the Countryside Agency, decided to embark on a Parish Plan to discover what the community wanted for the future of Lyminge Parish. The Lyminge Parish Plan Group was formed to steer the project.

Lyminge Parish Plan Group (LPPG) has been an evolving group of volunteers with various skills and talents which has devised several measures of consulting the community.

- A Photographic Workshop weekend was held in September 2003 during which local residents produced a databank of images of the whole parish.
- A “Three Wishes Campaign” was carried out in January 2004 in which all residents were given the opportunity to state their three wishes for the future of the parish and what they liked about it now. 1,000 wishes were received via the Village Newsletter and via an online message board.
- Following this a series of Roadshows “Lyminge Past Present and Future” were held in September 2004 in the three settlements of the parish: Lyminge, Etchinghill and Rhodes Minnis. Visitors were able to view historical photographs of their neighbourhoods, photographs and film taken during the Workshop and were then asked to record in a variety of ways (including video interviews) what they wished for the future. This was also an opportunity for the community to talk to parish and district councillors, members of the LPPG, the local community warden as well as amongst themselves.
- As a result of all these activities a questionnaire reflecting, in part, the previous findings of the Three Wishes survey was compiled. The questionnaire was delivered to every residence in the parish in February 2005.
- A parallel consultation exercise was undertaken in the form of a small questionnaire given to 200 visiting groups to Sibton Park (a complex of holiday cottages within the parish). Although only 11% responded it was fascinating to catch a glimpse of how visitors view Lyminge Parish and how this compares with the residents’ opinions.

The results of these consultations with the community have culminated in this report and action plan for the future which represents the community’s wishes. The full report has not been accepted by any governing authority (as yet). It has been produced, at this time, so that any such body can deliberate the future plans for Lyminge Parish with some knowledge of the views of the community. Undoubtedly there will be much debate locally about the report, however, it must be remembered that everybody was given the opportunity to take part in the first two consultations and everybody over ten years old was asked to complete the questionnaire. The response rate to the questionnaire was very good (51.2%). All this suggests that there is a mandate for the recommendations that have been made.

A summary of the report is being delivered to all residences in the parish and a copy is included with this report. Full details will also be found on the website [www.lymingeparishplan.org.uk](http://www.lymingeparishplan.org.uk)

Change has occurred in this very attractive corner of Kent since before humans could write. In fact this whole striking landscape is dependant on the activities of people and therefore change should not be feared. This plan does not propose whole-scale change which would alter the landscape out of all recognition, but rather the hope is for small changes that will bring improvements for all.

# LYMINGE PARISH PLAN REPORT

**1. AIMS** - Throughout the appraisal process the Parish Plan has focused on the following clear and agreed aims:

- 1.1 To produce a plan based on the views of the community for Lyminge Parish by:
- 1.2 Defining the community needs by appraisal and evaluation.
- 1.3 Ensuring the involvement and participation of the whole community.
- 1.4 Identifying appropriate solutions and agreeing an action plan in consultation with the Parish Council.
- 1.5 Targeting those individuals, groups and bodies who will be charged with taking the action plan forward.

**2. COMMUNITY INVOLVEMENT** - To encourage the widest possible involvement of all the people of Lyminge Parish by:

- 2.1 Initially highlighting important parish issues by surveying the parish in the form of a 'Three Wishes Survey'.
- 2.2 Holding a photographic workshop weekend to engage local residents and produce a visual record of the parish
- 2.3 Initiating further public consultation in the three parish community halls in the form of 'Roadshows', allowing interaction between parishioners and local Parish Councillors.
- 2.4 Surveying the parish using a questionnaire covering the issues raised in the 'Three Wishes' and Roadshow Campaigns.

See Appendix 1

### **3. LYMINGE PARISH PLAN TEAM AND ACKNOWLEDGEMENTS**

- 3.1 The Lyminge Parish Plan Group wishes to thank everyone for their contributions to this project. In particular, thanks are due to Alistair Bailey, James Butcher, Deborah Caldow, Barbara Collins-Newing, Charlie Dodds, Mike Foxon, Paulien Gill, Denise Glenister, Catherine Hughes, Deirdre Macdonald, Lesley Malkin, Julie Murphy, Les Preston, Wendy Preston, Jack Simmons, Mark Thomas, Steve Thomas, Noel Tatt, Colin Walton, Philip Wilson, Hannah Zaidi and all those who have helped us on the way.
- 3.2 Advice and support was also kindly provided by Action for Communities in Rural Kent (Richard Backhouse and Victoria Lawson), the Kent Downs AONB Unit, Action for Communities in Rural Sussex, Kent Archaeological Society and Shepway District Council.
- 3.3 The Group is grateful for financial contributions received from The Countryside Agency and Lyminge Parish Council for this project and for assistance from the Etchinghill Residents Association, the Lyminge Association, Red Dragon IT Ltd, Foundation Carpets and Sibton Park.
- 3.4 **Special thanks must go to the Channel Business Centre, Castle Hill Avenue, Folkestone** for all their free time and help with the production of both this document and the summary version of the plan. And finally to those who gave of their valuable time delivering flyers and questionnaires and those who helped with road shows and photographs.

### **4. WHY DO WE NEED A PARISH PLAN?**

- 4.1 To be better informed about what residents want from, and for their community.
- 4.2 To collect evidence that will help those who make decisions affecting the village.
- 4.3 To take stock of what the community has and what it needs.
- 4.4 To be better informed about changes that will affect the future viability and needs of the community.
- 4.5 To understand the needs and wishes of the whole community.

## **5. METHODOLOGY OF THE PLAN**

- 5.1 After a number of team meetings and a Photographic workshop weekend it was decided firstly to survey the parish in the form of a 'Three Wishes' campaign. This was carried out in January 2004 using the Village Newsletter which his delivered to every household in the parish. The aim of this was to enable parishioners to participate in a New Year campaign to find out what would be their three main wishes for the future of the parish. A three wishes slip went out to all households in the village. In addition it was possible to give your three wishes by a cut off slip in the local newsletter. To make it easy returns could be posted to local nominated households strategically placed or via the online message board. We had over 360 replies amounting to 1000 wishes!\_ The returns from this campaign were then formulated into priority order under specific headings.
- 5.2 A series of Roadshows was held later that year throughout the parish in order to involve parishioners in the main issues arising from the 'Three Wishes' campaign. The theme of these roadshows, which were well attended, was 'Lyminge Parish Past Present and Future'.
- 5.3 Following the Roadshows a detailed questionnaire was developed by the team, which was delivered to every household in the parish with an SAE to the Channel Business Centre which kindly facilitated their analysis and spreadsheet recording.
- 5.4 An Action Plan was drawn up with the Parish Council's representative on the Parish Plan Group and agreed with the parish council at a meeting in October 2005.

## **6. THE QUESTIONNAIRE**

- 6.1 Parishioners were given six weeks in which to return the questionnaires. This was run in conjunction with an advertising campaign to encourage parishioners to fill in the questionnaires in order to obtain a statistically viable return for the survey. Each questionnaire was delivered with a stamped addressed envelope for return to a local business centre. Parishioners returned 51.2% from the 1,224 households delivered to throughout the Parish. This represents a good statistical return for such a survey.

See Appendix 2

## **7. KEEPING RESIDENTS INFORMED**

- 7.1 Analysed returns were then discussed at an initial meeting with Parish Councillors followed by a working meeting in order to draw up a Parish Action Plan. In order to inform residents of the outcomes of all of the consultations it was decided to distribute to all households a coloured brochure in the form of an 'easy read' shortened version of the main plan. The main official plan would be in the form of a bound black and white document with a coloured front cover, which would be distributed for official use. The official Parish Plan document would also be placed on the Parish Plan website, [www.lymingeparishplan.org.uk](http://www.lymingeparishplan.org.uk) for those residents who required more detailed information and for access should official organisations wish to refer partner organisations to the plan.

See Appendix 6

## 8. TRAFFIC MANAGEMENT, ROAD SAFETY AND PARKING

- 8.1 **Speed** - It is clear that the speed and movement of traffic through the parish and Lyminge in particular is of major concern to many residents.

**Recommendation 1:** The Road Safety and Parking Sub-Committee of the Parish Council to prepare a plan to work in conjunction with Kent County Council Highways Department to produce various low-cost road schemes to bring to public consultation.

See Appendix 7

- 8.2 **Traffic** - The information available suggested reporting of those vehicles speeding through the parish should be carried out by the appropriate traffic speeding officials at more regular intervals in order to tackle the problem in a more meaningful way.

**Recommendation 2:** The Parish Council to consider discusses speed-monitoring systems with the police and other parish councils to establish if a cost-sharing arrangement is possible and if more traffic monitoring can be carried out in the Elham Valley.

See Appendix 7a

- 8.3 **Parking** - The community car park in Lyminge is close to all village shops and is very often full during normal working hours. Cars unable to park in the car park overflow onto nearby roads causing safety issues with local amenity users and particularly in the vicinity of the bus stop and opposite this stop outside local shops. This area is of increased concern because of vehicles entering and exiting the car park, which in turn, is near a 'blind bend'. The lack of off road parking on some roads particularly in the evenings and weekends raises issues of neighbour conflict and importantly the free passage of emergency vehicles.

**Recommendation 3:** The Road Safety and Parking Sub-Committee of the Parish Council to work with with Kent County Council Highways Department and Shepway District Council, to investigate solutions leading to improved car parking, action against illegal parkers and measures to improve traffic management in the parish and particularly in the area of the Lyminge car park.

See Appendix 7c

- 8.4 **Emergency Access** - Residential parking issues in the village of Lyminge raised concerns regarding access for emergency vehicles, particularly, in the evenings and at weekends in the areas of Mayfield Road, High Street and Church Road.

**Recommendation 4:** The Parish Council to consider contacting the emergency services in order to carry out a survey to determine any access problems their emergency vehicles may encounter in the evenings and at weekends in the area of Mayfield Road, High Street and Church Road. The Parish Council should request that a report be submitted by the emergency services for consideration by the Parish Council and the Kent County Council Highways Department

See Appendix 7d

- 8.5 **Speeding** - Road safety issues highlighted the concerns residents have with vehicles which speed through the Parish, particularly from the outskirts of Lyminge through Etchinghill and beyond.

**Recommendation 5:** The Parish Council, within its road safety and parking plans, to work with the Shepway District Council Parking Wardens, Police Officers, and Kent County Council Highways Department to help enforce speed limits restrictions.

See Appendix 7

- 8.6 **HGV control in the Elham Valley** - The limits of the Elham Valley are bisected by the A2 in the north and the M20 in the south with the Channel Tunnel complex sitting astride the M20 at its southern boundary. Vehicles exiting UK for continental destinations, in the main, do so through these main lines of transit. Should one of these transit lines be closed for any reason a noticeable increase of HGV vehicles is apparent in the Elham Valley. Drivers switch transit routes to gain advantage by avoiding Operation Stack, causing traffic and environmental difficulties.

**Recommendation 6:** The Parish Council to liaise with Kent County Council Highways Department to improve appropriate signage at key locations to deter the use of the Elham Valley road by HGVs except for those requiring access to valley locations.



## 9. HIGHWAYS MATTERS

- 9.1 The parish comprises the three villages of Lyminge, Etchinghill and Rhodes Minnis. These three principle population areas are not connected by urban hard surface paths, only by indirect rural paths and bridleways.

**Recommendation 1:** The Parish Council to liaise with the Kent County Council Highways Authority in order to develop a hard surface path and pavement network which connects all principle centres of population in the Parish.

See Appendix 8

- 9.2 **Paths and Pavements** - The Parish Plan identified concerns regarding urban paths and pavements, which impeded pedestrian access because of overhanging vegetation growing from adjoining private properties or on the path itself. Additionally concerns were expressed regarding dog fouling on certain paths and pavements.

**Recommendation 2:** The Parish Council to continue to monitor the situation and prompt the Kent County Council Highways Department to act in a timely manner when obstructions or dog fouling reports are brought to their attention.

See Appendix 8b

- 9.3 **Lighting** - The Parish Plan identified Tayne Field, Palm Tree Way to Church Road, Brady Road and the road leading to the Lyminge village hall car park as being intimidating or dangerous due to the lack of adequate lighting.

**Recommendation 3:** The Parish Council to examine ways to promote appropriate levels of lighting in these areas.

See Appendix 8c

- 9.4 **Flooding** - Parishioners living near the Nailbourne, a stream running through the village, voiced concerns that flooding had occurred in the past through lack of timely action to clear 'choke points' in areas along the course of the stream. Additionally concerns were raised concerning the inadequate cleaning of road surface drains within the village.

**Recommendation 4:** The Parish Council through its representation on The Nailbourne and Little Stour Management Group to work to identify 'choke points' along the Nailbourne and road surface drains which need cleaning. The Parish Council should advise the Kent County Council Highways Department or land owners in order that appropriate and timely action is taken to clear these choke points after the autumn season and prior to the onset of winter or at any other appropriate time should the need arise.

See Appendix 8d

- 9.5 **Access to Rural Paths** - The wider provision of 'dog friendly' stiles and 'kissing gate' access points where identified as a requirement on some rural paths around the parish. Some stiles are too high to meet the needs of all members of the community and in these cases 'kissing gate access' or other appropriate access should be considered.

**Recommendation 5:** The Parish Council Footpaths Officer to liaise with Kent County Council Public Rights of Way Officers to increase, where feasible, the number of 'dog friendly stiles' and kissing gate access or other appropriate crossing points in order to improve footpath access.

See Appendix 8b

- 9.6 **Dog Fouling** - Parishioners expressed concerns regarding dog owners who failed to remove dog fouling after their dogs had fouled public paths and footways.

**Recommendation 6:** The Parish Council to continue to encourage dog owners to remove fouling on footways and footpaths by highlighting these unsocial acts in the Parish newsletter and to seek Shepway District Council Dog Wardens visit the Parish from time to time in order to encourage responsible dog ownership and if appropriate take action under The Dogs (Fouling of land) Act 1996.

- 9.7 **Visitors** - Visitors to the Parish indicated they had difficulty locating the churches and community halls despite the various signposts already in existence.

**Recommendation 7:** The Parish Council to consider the provision of signage to promote its churches and community halls, as and when funds are available.

See Appendix 9

## 10. CRIME

- 10.1 Even in a low crime area such as Lyminge Parish the parishioners still retain a perception of concern regarding all areas of crime. A few years ago the Elham Valley had been appointed a Rural Community Police Constable, but due to the low level of crime in the Lyminge locality, his main area of work is in the parish of Hawkinge to the east, only giving attention to Lyminge Parish as and when the need arises. A new Rural Community Warden has recently been appointed and is being very successful. The desire to join a neighbourhood watch scheme is clearly shown in the survey. However, turning that desire into practice presents the parish with a challenge.

**Recommendation 1:** The Parish Council to act on the community's wishes to have increased visible policing by working with the Rural Community Warden and working towards the appointment of a Rural Community Police Officer dedicated to the Elham Valley area.

**Recommendation 2:** The Parish Council to encourage the Community Warden to work with the present co-ordinators of the Neighbourhood Watch scheme in order to promote local residents' participation.

See Appendices 10a and 10b

- 10.2 **Youth Crime?** - A common perception is that younger members of the community who hang around the streets during the evenings may commit crimes. Their assumption is that these youngsters do not have enough to do in the local villages to occupy their social time and cannot easily get to the towns.

**Recommendation 3:** The Parish Council to work with the Youth Action Charity, Lyminge Methodist Youth Club, Scouts, Guides, Brownies, Cubs, Rainbows, Beavers and Etchingill Youth Club to improve youth facilities within the parish.

See Appendices 10a and 10b

## 11. HOUSING DEVELOPMENT

- 11.1 The majority of the community seem to be aware that designated areas in the South East of England have been earmarked for large increases in housing development. Parishioners strongly indicated (68% of questionnaire respondents) that future new development should be resisted.

**Recommendation 1:** The Parish Council should reflect in representations on the South East Plan and emerging Local Development Documents the parish's wishes on new housing development in the parish.

See Appendix 11

- 11.2 **Housing Needs** - Parishioners made informed comments that it was difficult for local young people to set up their own family homes within the parish, due to the high cost of housing and cost of rental properties in the area.

**Recommendation 2:** The Parish Council Planning Committee to lead on a Housing Needs Survey and other appropriate reports to assist in creating a plan to help provide opportunities for local young people to purchase or rent affordable homes.

**Recommendation 3:** The Parish Council Planning Committee to work with the Rural Housing Trust to establish the precise needs of the community to provide opportunities for local young people to purchase or rent affordable homes.

See Appendix 11a

## 12. COMMUNITY FACILITIES

- 12.1 The Post Office, situated in Lyminge, came out as very well used in the questionnaire. This drawing effect helps to ensure that local shops, mostly situated nearby, remain open and from comments made it is clear that they are an integral part of parish life. Other issues raised by the community indicated a need for more flexible opening hours, especially at lunch times and for better access to be made available for the physically disabled to these facilities.

**Recommendation 1:** The Post Office and all local shops to be encouraged to investigate the viability of lunchtime and more flexible opening hours. In addition better physical access needs to be investigated. Community support should be given to help achieve this.

See Appendix 12

- 12.2 **Public Houses** - There was strong opinion that the community needed vibrant Public Houses which offer friendly and congenial atmospheres for all aspects of pub life.

**Recommendation 2** The public houses to be informed of the results of the questionnaire in order that they can meet the expectations of the community.

- 12.3 **Physical Features** - The most important physical features in the parish were St Mary's and Ethelburga Church in Lyminge followed by the surrounding countryside and Tayne Field in Lyminge. The churches were viewed by 61% as historic buildings, by 47% as used for weddings and funerals and by 43% as a focal point for the community.

**Recommendation 3:** The Parish Council to inform all the churches in the parish of the questionnaire results and encourage them to develop stronger links with the parish community, where possible, in order that they can meet the community's needs.

See Appendix 13

- 12.4 **Community Halls** - The community halls are also revealed to be very important to rural life. In Etchinghill a new hall was opened in 2004, whilst Lyminge Village Hall, Rhodes Minnis Village Hall and the Lyminge Methodist's hall have been given refurbishment grants in recent years.

**Recommendation 4:** Community Organisations should promote the parish's community halls to meet the evolving needs and aspirations of the community by giving appropriate assistance. Those managing the Halls should work with Community Groups to ensure that community needs are being met.

See Appendix 14

### 13. BUSINESS DEVELOPMENT

- 13.1 Parishioners were only slightly in favour of further business development (46% against 40%, with 14% offering no opinion). However 75% of those in favour of further business development wished to see more shops and offices encouraged by converting existing redundant buildings. A sizeable 25% indicated they would be happy to see guest accommodation becoming available in the Parish.

**Recommendation 1:** The Parish Council Planning Committee should encourage appropriate business development.

See Appendices 15 & 15a

### 14. SPORTS FACILITIES

- 14.1 Respondents showed that 55% of those questioned were dissatisfied with the present sports facilities and clear needs were indicated for an improvement to the present facilities. Many respondents commented regarding the importance of making provision for the younger generation. The provision of tennis courts in the parish was sought by a large number of residents.

**Recommendation 1:** The Parish Council should monitor the current plans to create new leisure facilities, consisting of skateboard, tennis/multi-sports court for Lyminge, and a multi-sports court for Etchinghill, to ensure that they meet the needs of the community. They should also ensure that the funding requirements of both plans are complementary.

**Recommendation 2:** The Parish Council should ensure the promotion of a new tennis club to make the best use of the new tennis facilities to be built in Lyminge.

See Appendix 16

## 15. STREET LIGHTING

- 15.1 The access road to the Lyminge village hall can be dark during winter months. The community's expectations are that they should be able to get their children safely to current activities at the hall and the nearby Scout hut. The need for better lighting will be reinforced with the extra pedestrian movements expected with the building of new leisure facilities adjacent to the Lyminge village hall.

**Recommendation 1:** The Parish Council should seek to find an appropriate lighting scheme to allow safe access to Lyminge village hall, the Scout hut and the new leisure facilities whilst minimising light pollution in this edge of village location.

## 16. RADIO AND TV RECEPTION

- 16.1 Parishioners indicated that terrestrial and digital reception proved difficult in various areas of the parish, especially when viewing or listening to BBC channels by terrestrial or digital broadcasts using directional aerials. A cross border agreement between the UK and French governments restricting signal strengths, but not applying to independent broadcasters seems to be the cause of the problem.

**Recommendation 1:** The Parish Council to seek to find a knowledgeable volunteer to contact the BBC reception and monitoring services and other broadcasters to look at ways of improving the service.

See Appendix 17

## 17. MOBILE TELEPHONES

- 17.1 The difficulty experienced by users of mobile phones on the Elham valley was commented on. A number of providers provide a patchy or poor service whilst others provide a good to adequate service.

**Recommendation 1:** It was felt that this problem could be taken up by approaching the Youth Action Charity to investigate the best provision of mobile phone reception services within the valley. This information could then be published in the Lyminge Newsletter so that residents may make a more informed choice.

## 18. HEALTH, SOCIAL SERVICES AND EDUCATION

- 18.1 The parish has two GP surgeries, both based in Lyminge, in addition a Lyminge practice provides alternative therapies, with Age Concern offering a range of services for elderly citizens. The parish lost its private dental practice nearly two years ago. Parishioners indicated they would like a wider range of opening times at the GPs' surgeries with access to a female doctor. A further need was identified for more adult education, particularly IT classes.

**Recommendation 1:** The Parish Council to forward these aspirational details from the questionnaire to GPs' surgeries, the local Primary Care Trust and the Patients Advise and Liaison Service. The Parish Council to seek a meeting to discuss the feasibility of implementing these community concerns.

**Recommendation 2:** The Parish Council to seek to facilitate improved adult education classes within the Parish with an emphasis on IT training.

See Appendices 18 and 18a

- 18.2 **Walking Bus** - The Primary School in Lyminge is situated in Church Road and only has off-road parking for about 16 vehicles. Of the 100+ pupils on the roll most children come from Lyminge and are within walking distance, a smaller number of children need to travel several miles from nearby villages.

**Recommendation 3:** The Parish Council to work with the school to establish if there is a need to create a 'walking bus' and how this can be encouraged and supported.

See Appendix 19

## 19. ENVIRONMENT

- 19.1 The concerns of the community towards the global environment meant that Shepway District Council's pilot waste collection service to collect garden refuse in addition to a paper collection has proved both successful and popular. The recent introduction of an additional curbside collection of glass, aluminium and plastic is also proving very successful.

**Recommendation 1:** The Parish Council to contact Shepway District Council recycling officer to convey these results and to request the monitoring of the continued need for the recycling 'bring point' in the Lyminge car park. Should a lack of use be identified to investigate the removal of the point in order that better use may be made of the space for more specialist recycling items.

See Appendix 19



## 20. PARISH COUNCIL FUNDING AND COMMUNICATIONS

- 20.1 The Parish Council has kept the precept it charges annually at the same level for a number of years. It is mindful of the overall council tax rises and lack of rural services faced by residents, claimed by local government to be due to reduced central government funding.

**Recommendation 1:** services which residents feel are not being provided in a satisfactory manner were indicated in the questionnaire. Members of the Parish Council Finance Committee are requested to prepare a report regarding these services to be sent to the Kent County Council and Shepway District Council. .

See Appendix 21

- 20.2 The Parish Council has issued a regular report to the community since 2004, firstly as part of the Lyminge Newsletter, and over a year ago, as a full two page attachment. The council newsletter reaches most households in the Parish and is also available on the Lyminge website at [www.lyminge.org.uk](http://www.lyminge.org.uk). It was also discovered during the delivery of the questionnaire that the Lyminge Newsletter is not delivered to all residences in Lyminge Parish.

**Recommendation 2:** That the Parish Council newsletter to continue to be issued every month as an effective way of communicating its work to its constituents.

**Recommendation 3:** That the Parish Council uses its best endeavours to ensure that every household in the parish has access to the Council Newsletter either by home delivery, pick up points at local businesses, at the library or via the parish website. The Parish Council instructs the Parish Clerk to make arrangements so that in addition to posting the latest minutes of the Council's meetings on local notices boards they are also posted on the Parish website.

See Appendix 21c

**Recommendation 4:** That the Parish Council's Clerk ensure that the Parish Council Minutes shown on the notice board are produced in the largest font possible, commensurate with available space, to allow readership by most parishioners.

**Recommendation 5:** That the Parish Council should ensure it issues important items of interest in the form of a press release to editors of local papers. Additionally details of Parish Council business are forwarded to local correspondents in order that the widest possible publicity be given to council business.

**Recommendation 6:** That the Parish Council indicates in its newsletter as much information as space allows to help residents establish what planning applications are currently active. The Parish Council, when it reviews planning applications, publishes its decision within the Minutes of its meetings and these are made available in the parish library and on the Lyminge parish web site.

**Recommendation 7:** That the Parish Council should seek to work with the village associations to provide any available funds to improve or increase the notice boards around the parish.

**Recommendation 8:** That the Parish Council should seek with other communicators such as the Lyminge Newsletter to provide information to the community on local interest and the environment

**Recommendation 9:** The Parish Council should encourage Lyminge Association to deliver the Lyminge Newsletter to all residences in the parish.

20.3 The Parish boundary includes the villages of Lyminge and Etchinghill but only half of Rhodes Minnis which it shares with Elham Parish Council. A small amount of residents from Rhodes Minnis completed the questionnaire but 39% of them indicated a desire for the parish boundary to be exclusive of the complete settlements.

**Recommendation 9:** That the Parish Council should send a report of their findings to neighbouring Parish Councils to encourage discussion on any changes needed and how any resident's concerns can be currently addressed

## 21. TRANSPORT

- 21.1 **Bus Service** - The Parish and Elham Valley area is served by two operators, Stagecoach and Poynters Coaches.
- 21.2 The Folkestone and Canterbury service via Etchinghill and Lyminge runs hourly throughout the day. However this reduces to a two hourly service after 17.00hrs and terminates by 20.00hrs.
- 21.3 The Canterbury to Hythe service via Lyminge is the only service calling at Sandling (the Parish's nearest railway station). Residents living in Etchinghill have no access to this service and therefore are unable to use local train facilities which connect public transport.
- 21.4 The area's busy William Harvey Hospital at Ashford is not served by a direct bus route.

**Recommendation 1:** That the Parish Council should prepare a report of the issues raised on:-

- Through ticketing to Ashford etc
- Train synchronicity
- Late services e.g. 18.00hrs bus from Folkestone
- Frequency of services
- Access to Hythe from Etchinghill

To be sent to the Public Transport operators and Kent County Councils Highways Department.

See Appendix 22

- 21.5 **Bus Shelters** - The Parish is served by sufficient bus stops but only some of those in the Folkestone direction have a bus shelter. These bus shelters vary in design and most are in need of refurbishment.

**Recommendation 2:** In order to encourage increased levels of public transport use and to provide shelter for the large numbers of secondary school children already using buses to journey to school the Parish Council should allocate available funding to work with the public transport operators and Kent County Council's Highways Department to provide or improve the bus shelters in the Parish.

- 21.6 **Cycle Track** - The geographical layout of the Elham Valley is that of an escarpment laying at about 150 metres and falling away to the coastline in the Folkestone area. The valley is traversed by a busy but narrow road which feeds all other communities in the valley and which leads to the A2 at the northern end of the valley and the M20 at its southern end.

21.7 The questionnaire completed by over 51.2% of the community indicated that Parishioners owned about 413 bicycles. This may indicate that the total amount may be in the order of about 800. The provision of an attractive cycleway along the old railway line was promoted by many residents in both the questionnaire and the Three Wishes campaign.

**Recommendation 3:** That the Parish Council to liaise with Sustrans in order to identify the feasibility of constructing a cycle track on the course of the former railway line which ran along the Elham valley through the parish to Folkestone.

# APPENDICES CONTAINING STATISTICAL INFORMATION

## Page No

1	‘Three Wishes’ and Roadshows Summaries.....	22
2	Example Questionnaire .....	23
3	Important Issues Facing Lyminge Parish.....	38
4	Hot Topics.....	41
5	Ten Most Important Issues .....	42
6	Coloured Brochure .....	43
7, a, b, c & d	Traffic Management, Road Safety and Parking .....	44
8, a, b, c & d	Highway Matters .....	48
9	Visitors’ Views of Lyminge Parish.....	52
10, a & b	Crime, Anti-Social Behaviour and Policing .....	53
11 & a	Housing Development.....	55
12	Community & Leisure Facilities .....	57
13	Most Important Physical Features .....	58
14	Community Halls .....	58
15 & a	Business Development .....	59
16	Sports Facilities .....	61
17	Radio & Television Reception.....	62
18, a & b	Health, Social Services & Education .....	63
19	Environment, including ‘Walking Bus’ .....	66
20	Community Services.....	66
21, a, b & c	Parish Council Funding and Communications .....	67
22, a & b	Transport.....	70

### Further Statistical Information

23	Households.....	72
24	Age Distribution .....	73
25	Population.....	74
26	Time Lived in Parish.....	74
27	Nature of Occupation .....	75
28	Place of Occupation.....	75
29	Churches .....	76
30	Library .....	77
31	Children’s Play Areas, Lyminge Forest, Tayne Field.....	77
32	Local Government Parish Boundary.....	78

### Additional Information

33	Directory of Useful Parish Telephone Numbers and Email Addresses .....	79
34	Future Parish Challenges .....	82

**Appendix 1**

**Three Wishes Summary**

**Roadshow Summary**

		<b>Responses</b>	<b>Percentage</b>	<b>Responses</b>	<b>Percentage</b>
	HOUSING & DEVELOPMENT	62	5.9%	44	13.93%
	FOOTPATHS & BRIDLEWAYS	78	7.4%	36	11.39%
<b>Clean, tidy, well-maintained villages</b>	ROADS & DRAINS	41	3.9%	4	1.27%
<b>202</b>	LIGHTING	37	3.5%	1	0.32%
	ENVIRONMENT	63	6.0%	6	1.90%
	LITTER	61	5.8%	9	2.85%
<b>Traffic and Transport</b>	TRAFFIC	146	13.9%	25	7.91%
<b>226</b>	PUBLIC TRANSPORT	43	4.1%	12	3.80%
	PARKING	37	3.5%	14	4.43%
<b>Sports and Activities</b>	FACILITIES FOR YOUTH	139	13.3%	2	0.63%
<b>232</b>	SPORT	79	7.5%	18	5.69%
	ACTIVITIES	14	1.3%	5	1.58%
<b>Amenities</b>	LYMINGE FOREST	8	0.8%	0	0%
<b>75</b>	RECYCLING	15	1.4%	31	9.81%
	VILLAGE HALL	9	0.9%	1	0.32%
	INFORMATION TECHNOLOGY	20	1.9%	0	0%
	SERVICES	23	2.2%	3	0.94%
	EDUCATION & CHILDCARE	39	3.7%	0	0%
	SHOPS & BUSINESSES	87	8.3%	63	19.94%
	POLICING	26	2.5%	0	0%
	LOCAL COUNCILS	15	1.4%	9	2.85%
	GENERAL	5	0.5%	33	10.44%
<b>Total</b>		<b>1,047</b>	<b>100.0%</b>	<b>316</b>	<b>100.00%</b>



## Appendix 2

# The Questionnaire

Lyminge Parish Council has helped to establish the Lyminge Parish Plan Group to produce a plan for the future of our locality based on the wishes of our community. You may have taken part in our previous activities. Now we are reaching the most important part – **The Questionnaire**. It is based on the concerns you raised previously through our projects. It is **very important** that your household completes this as it is **your main opportunity to provide information**. The

result will be that an action plan for the future of our parish can be prepared. **It should only take about 20 minutes for each person to complete. It is confidential** and cannot be traced back to you.

**The Questionnaire** is divided into two parts:

**PART A** -To be completed by one adult member of your household

**PART B** -To be completed by all members of your household (aged over 11 years). We are involving children in this as their future is important. If they need help, please could an adult guide them.

***Throughout this questionnaire you will find help about completing the form written in italics like this.***

**If you have any queries about completing this questionnaire please do not hesitate to contact one of the Parish Plan Group members listed below:**

Mike Foxon - Lyminge - 862073

Les Preston - Etchinghill - 863495

Alistair Bailey - Etchinghill – 864235

Charlie Dodds – Lyminge – 862800

If you make a mess of your questionnaire or require one in large print then further copies can be down-loaded from our website [www.lymingeparishplan.org.uk](http://www.lymingeparishplan.org.uk) or obtained from our secretary, Les Preston (863495).

When your household has completed the questionnaire **put it in the envelope provided and post it by Thursday 31<sup>st</sup> March**. If you lose your envelope the return address is:

Lyminge Parish Plan  
Channel Business Centre  
Ingles Manor, Castle Hill Avenue  
Folkestone  
Kent CT20 2RD

A report will be written from all your responses which will be published later in the year and a summary will be sent to all households in Lyminge Parish.

Thank you for your help.

**PART A. - TO BE COMPLETED BY 1 ADULT PERSON FROM YOUR HOUSEHOLD.**

**Place one tick (✓) in the box of your choice unless asked otherwise.**

**General Location**

**A1. Where is your home located?**

Lyminge  
Etchinghill  
Rhodes Minnis  
Outlying areas

**A4. Has any member of your household permanently moved out of the Parish in the last 5 years?**

Yes  
No  
Comment (*e.g. why anyone has moved.*):

**Your Household & your home**

**A2. Please enter, in each age group, the number of people in your household.**

Age	Male	Female
0-4		
5-10		
11-15		
16-17		
18-24		
25-44		
45-59		
60-64		
65-74		
75-84		
85+		

**A5. How many road-worthy vehicles are kept by your household?**

**Enter number in the box**      **Number**

Bicycles  
Cars  
Vans  
Motor bikes  
Specially adapted vehicles  
Lorries

**A6. Do you have any flooding problems or regular storm damage?**

Many problems  
Few problems  
No problems

**If you have a problem please describe it and the general location:**

**A3. Enter the number of children under 16 in your household who attend the following in or outside the parish:**

**IP =      in Lyminge Parish**

**OP =      outside Lyminge**

**Parish**

IP    OP

Mothers & Toddlers  
Pre-School  
Primary School  
Secondary School  
Special Needs School  
Other – state below

Comments:



**PART B - PERSONAL SECTION - FOR EVERY MEMBER OF THE HOUSEHOLD WHO IS 11 YEARS OR OVER TO COMPLETE.**

**The person who completed PART A can be person 1 and then each other household member can be 'Person 2', 'Person 3' etc.**

**Place one tick (✓) in the box of your choice unless asked otherwise.**

**People**

Other – state below

**B1. Are you male or female?**

Person 1 2 3 4 5 6

Male

Female

**B2. In what age group are you?**

Person 1 2 3 4 5 6

11-15

16-17

18-24

25-44

45-59

60-64

65-74

75-84

85+

**B3. How long have you lived in the Parish?**

Person 1 2 3 4 5 6

Less than a year

1-5 years

6-15 years

16-25 years

26-50 years

51+ years

Whole life

**B4. What is your main occupation?**

Person 1 2 3 4 5 6

Professional

Clerical

Skilled Manual

Manual

Shop work

School/College

Home Maker

Retired

Unemployed

**B5. Where is your main place of occupation, school or college?  
(e.g. Dover, Etchingill, At Home)**

- 1
- 2
- 3
- 4
- 5
- 6

**Transport and Highways**

**B6. If you travel to work, school or college what is your main means of transport?**

- Person                    1 2 3 4 5 6
- Walk
- Bus
- Car
- Motor Bike
- Bicycle
- Train
- Taxi/Private Hire

**B7. How often do you use the following services?**

**Enter code:**

- a – most days*
- b – about once a week*
- c – about once a month*
- d – a few times a year*
- e - never*

- Person                    1 2 3 4 5 6
- Stagecoach Bus
- Poynters Bus
- Supermarket Bus
- Train
- Taxi/Private Hire

**B8. Indicate any improvements in the public transport services you would like to see:**

**Tick (✓) more than 1 box if relevant.**

- Person                    1 2 3 4 5 6
- Bus shelters
- Routes
- Timetable
- Fares
- Reliability
- Location of bus-stops
- Disability access
- Improved Taxi service
- No opinion
- Comments (e.g. location etc):

**B9. Do you think there are any major 'danger spots' on the roads in the Parish?**

- Person                    1 2 3 4 5 6
- Yes
- No
- No opinion

**B10. If you answered 'Yes', where are the danger spots?**

- Person
- 1
- 2
- 3
- 4
- 5
- 6

**B11. Would you support any of the traffic calming measures below?**

**Enter a letter according to importance:**

**a = High importance**

**b = Medium importance**

**c = Low importance**

**d = No importance**

Person 1 2 3 4 5 6

New speed limit zones

Extension of speed limit zones

Road humps

Extension to 'No

Parking' zones

Increased 'On Road'

Parking

'Gated' entrances to settlements

Traffic Lights

Zebra Crossing

Flashing speed

indicator board

Frequent Police

speed checks

Other – Please state

Comments (*e.g. where traffic calming should be*):

Person

1

2

3

4

5

6

**B12. If you drive, do you have problems parking near the shops or library in central Lyminge?**

Person 1 2 3 4 5 6

Often

Occasionally

Never

Comments:

**B13. Do you experience the following parking problems near your home?**

Person 1 2 3 4 5 6

Cars parking on the pavement

Commercial vehicle parking

Nowhere to park

Cars blocking your entrance

No problems

**Please identify where any parking problem is:**

**B14. In relation to paths and streetlights, would you like to see any of the following in the parish?**

**Tick (✓) more than 1 box if relevant**

Person 1 2 3 4 5 6

Cycle paths

More pavements

More street lights

More footpaths

Pelican crossings

Dropped kerbs

Traffic islands

None of the above

**B15. If you feel any of the features in the previous question are required please indicate where in the parish they might be sited.**

Person

1

2

3

4

5

6

**Community Services**

Already in it

**B16. What are your views on the response or availability of the following services to the Parish?**

***Enter code:***

***a – good***

***b – reasonable***

***c – poor***

***d – have not used service***

Person                    1 2 3 4 5 6

Fire

Ambulance

Hospital transport

Police (Emergency)

Community Police

Community warden

Comments

**B17. Which, if any, of the following crimes and anti-social behaviour concern you in this Parish?**

***Tick (✓) more than one box if relevant.***

Person                    1 2 3 4 5 6

Burglary/Theft

Mugging

Vandalism

Drunkenness

Littering

No concerns

Other - state below

Comments

**B18. Would you like to join the Neighbourhood Watch Scheme?**

Person                    1 2 3 4 5 6

Yes

No

**B19. What are your views on the standard of these environmental services in the Parish?**

**Enter code:**        **a – good**  
                               **b – reasonable**  
                               **c – poor**  
                               **d – no opinion**

- |                     |   |   |   |   |   |   |
|---------------------|---|---|---|---|---|---|
| Person              | 1 | 2 | 3 | 4 | 5 | 6 |
| Street cleaning     |   |   |   |   |   |   |
| Drain clearing      |   |   |   |   |   |   |
| Street lighting     |   |   |   |   |   |   |
| Water supply        |   |   |   |   |   |   |
| Gas supply          |   |   |   |   |   |   |
| Electric supply     |   |   |   |   |   |   |
| Refuse collection   |   |   |   |   |   |   |
| Recycling service   |   |   |   |   |   |   |
| Recycling site      |   |   |   |   |   |   |
| Public Toilets      |   |   |   |   |   |   |
| Road Gritting       |   |   |   |   |   |   |
| Grass cutting       |   |   |   |   |   |   |
| Flower displays     |   |   |   |   |   |   |
| Litter bin emptying |   |   |   |   |   |   |

**Retail Services and Other Facilities**

**B20. If you usually shop in the Parish is it because...**

***(If you do not shop in the parish please go to next question.)***

**Tick (✓) more than one box if relevant**

- |  |   |   |   |   |   |   |
|--|---|---|---|---|---|---|
| Person                                   | 1 | 2 | 3 | 4 | 5 | 6 |
| The local shops give good value          |   |   |   |   |   |   |
| You like to support local shops          |   |   |   |   |   |   |
| You like the social contact              |   |   |   |   |   |   |
| It saves time                            |   |   |   |   |   |   |
| It saves transport costs                 |   |   |   |   |   |   |
| You don't have transport to go elsewhere |   |   |   |   |   |   |
| You need 'last minute' items             |   |   |   |   |   |   |
| Other – state below                      |   |   |   |   |   |   |
| Comments:                                |   |   |   |   |   |   |

**B21. If you usually shop out of the Parish, is it because...**

**Tick (✓) more than one box if relevant**

- |  |   |   |   |   |   |   |
|--|---|---|---|---|---|---|
| Person                                 | 1 | 2 | 3 | 4 | 5 | 6 |
| Goods are cheaper                      |   |   |   |   |   |   |
| You have more choice there             |   |   |   |   |   |   |
| It is convenient to your place of work |   |   |   |   |   |   |
| Easier to park                         |   |   |   |   |   |   |
| Other – state below                    |   |   |   |   |   |   |
| Comments                               |   |   |   |   |   |   |

**B22. If you use the Lyminge Post Office, please say what for...**

**Tick (✓) more than one box if relevant**

- |                       |   |   |   |   |   |   |
|-----------------------|---|---|---|---|---|---|
| Person                | 1 | 2 | 3 | 4 | 5 | 6 |
| Postal services       |   |   |   |   |   |   |
| Pensions              |   |   |   |   |   |   |
| Child Benefit         |   |   |   |   |   |   |
| Tax Credits           |   |   |   |   |   |   |
| Banking/cash          |   |   |   |   |   |   |
| Currency exchange     |   |   |   |   |   |   |
| Vehicle Tax           |   |   |   |   |   |   |
| Bill payments         |   |   |   |   |   |   |
| Insurance             |   |   |   |   |   |   |
| Passports             |   |   |   |   |   |   |
| Non Post Office goods |   |   |   |   |   |   |
| Don't use             |   |   |   |   |   |   |
| Other – state below   |   |   |   |   |   |   |
| Comments:             |   |   |   |   |   |   |

***You have passed the half way point.***

**Religion**

**B23. Are the local churches important to you for any of the following reasons?**

***Tick (✓) more than one box if relevant***

Person	1	2	3	4	5	6
For worship						
For private prayer						
For baptisms weddings and funerals						
For pastoral support						
To visit graves / war memorial						
As a focal point for the community						
As historic buildings						
Every place should have one						
To use the grounds as a public space						
Other – state below						
No importance						
Comments:						

**Leisure facilities**

**B24. How do you rate the following leisure facilities in the parish?**

***Enter code: a – good***

***b –reasonable***

***c – poor***

***d – not used this facility***

Person	1	2	3	4	5	6
Community Halls						
Library						
Public Houses						
Lyminge Forest						
Children's Play Areas						
Tayne Field						
Sports Facilities						
Other – state below						
Comments ( <b><i>if poor state where and why</i></b> ):						

**B25. If funding was available, does the Parish need any of the following sports facilities?**

**Enter a letter according to priority:**

**a = High Priority**

**b = Medium Priority**

**c = Low Priority**

**d = No Priority**

Person 1 2 3 4 5 6

Multi-sports court

Tennis court

Petanque / Boules pitch

Indoor sports centre

Skateboard park

Swimming pool

Other – state below

Comments (*e.g. Where?*):

**B27. Which new SOCIAL clubs/activities would you (or your children under 11 years) attend in the Parish if they were provided?**

Person

1

2

3

4

5

6

**B26. Which new SPORTS clubs/activities would you (or your children under 11 years) take part in or help organise in the Parish?**

Person

1

2

3

4

5

6

**B28. Do you think the halls in the parish are adequate for the needs of the community?**

**Enter code: a – yes**

**b – no**

**c – no opinion**

Person

1 2 3 4 5 6

Lyminge Village Hall

Etchinghill Village Hall

Rhodes Minnis Village

Hall

Lyminge Methodist

Church Hall

Comments (*e.g. if you answered ‘No’ state why?*):

**Information & Communication**

***You're two-thirds of the way through.***

**B29. About what subjects would you like to receive regular information?**

***Tick (✓) more than one box if relevant***

- |                           |   |   |   |   |   |   |
|---------------------------|---|---|---|---|---|---|
| Person                    | 1 | 2 | 3 | 4 | 5 | 6 |
| Parish Council activities |   |   |   |   |   |   |
| Planning applications     |   |   |   |   |   |   |
| Local interest            |   |   |   |   |   |   |
| Local Heritage            |   |   |   |   |   |   |
| Local Environment         |   |   |   |   |   |   |
| Leisure                   |   |   |   |   |   |   |
| Local Arts                |   |   |   |   |   |   |
| Local Sports              |   |   |   |   |   |   |
| Other – state below       |   |   |   |   |   |   |
| Comments:                 |   |   |   |   |   |   |

**B30. Do you have any reception difficulties with the following?**

***Tick (✓) more than one box if relevant***

- |                |   |   |   |   |   |   |
|----------------|---|---|---|---|---|---|
| Person         | 1 | 2 | 3 | 4 | 5 | 6 |
| Radio          |   |   |   |   |   |   |
| Digital radio  |   |   |   |   |   |   |
| Terrestrial TV |   |   |   |   |   |   |
| Free view TV   |   |   |   |   |   |   |
| Digital TV     |   |   |   |   |   |   |
| Satellite TV   |   |   |   |   |   |   |
| Mobile Phone   |   |   |   |   |   |   |
| Broad Band     |   |   |   |   |   |   |
| Comments:      |   |   |   |   |   |   |



**B31. In relation to information services, do you think that the parish needs any of the following?**

**Tick (✓) more than one box if**

**relevant**

Person 1 2 3 4 5 6

Notice boards

Tourist information points

Maps

Signposts

Brown Tourist signs

Other – state below

Comments (*e.g. where any of these should be sited*):

### Education

**B32. Do you think the parish needs any of these additional educational facilities?**

**Tick (✓) more than one box if**

**relevant**

Person 1 2 3 4 5 6

Mother & Toddlers

Pre-School

Childminders

Full day Childcare

After School clubs

Holiday play scheme

Adult Education

Other – state below

Comments:

### Local Government

**B33. How well does the local council publicise its decisions and activities?**

Person 1 2 3 4 5 6

Very well

Reasonably well

Poorly

No opinion

Comments (*e.g. any additional information you feel is needed*):

**B34. How do you hear about local council decisions and activities?**

Person 1 2 3 4 5 6

Notice board

Council Newsletter

Word of Mouth

I don't hear about them

Other

Comments:

**B35. Would you be prepared to pay a slightly higher council tax to meet some of the additional agreed needs of the parish?**

Person 1 2 3 4 5 6

Yes

No

No opinion

Comments:

**Health and Social Services**

**B36. If you have used any of the following services which cover the Parish during the last year, how do you feel with the service provided?**

**Enter code: a – it was good  
b – it was reasonable  
c – it was poor  
d – not used this service**

Person	1	2	3	4	5	6
Social care						
Inc. Home help						
Dentist surgery						
Doctor's surgery						
District Nurse						
Health Visitor						
Maternity care						
Chiropody service						
Physiotherapy services						
Occupational Therapy provider						
Alternative Treatment provider						
Counselling service						
Loan of medical equipment						

**B37. Do you think NHS services are adequate in the locality?**

Person	1	2	3	4	5	6
Yes						
No						
No opinion						

**Comments (e.g. if you feel the services are inadequate or may be so in the future please explain):**

**Environment**

**B38. What do you think should be done to help protect and enhance the local environment of the Parish?**

**Enter a letter according to priority:  
a = High Priority  
b = Medium Priority  
c – Low Priority  
d = No Priority**

Person	1	2	3	4	5	6
Improved doorstep recycling						
Improved recycling sites						
Energy saving						
Improved public transport						
Car sharing						
'Walking Bus'						
Other – state below						
Comments:						

**B39. Do you experience any of the following difficulties when using local footpaths, byways and bridleways?**

**Tick (✓) more than one box if relevant**

Person	1	2	3	4	5	6
--------	---	---	---	---	---	---

Obstructions						
Animals						
High stiles						
Mud/Water						
Crops across path						
Other users						
Bushes/nettles						
No signposts						
Crossing roads						
Other – state below						
No difficulties						

**If you indicated difficulties please state where they are:**

**Housing/Business development**

**B40. Would you like to see further housing development in the Parish?**

Person            1 2 3 4 5 6  
Yes  
No  
No opinion

***If you answered 'No' or 'No Opinion' go to B44.***

**B41. Which types of housing development would you support in the Parish?**

***Tick (✓) more than one box if relevant***  
Person    1 2 3 4 5 6  
Homes for young couples  
Large family homes  
Small family homes  
Executive homes  
Homes for people with disabilities  
Homes for single people  
Other – state below  
Comments:

**B42. What type of housing development would be acceptable in Lyminge Parish?**

***Tick (✓) more than one box if relevant***  
Person    1 2 3 4 5 6  
Single Dwellings in controlled locations  
Small group(s) of less than 10  
Carefully designed larger groups  
Conversion of redundant buildings  
Expansion on the edge of settlements  
Other – state below  
Comments: ***(e.g. where any of these developments could happen.)***

**B43. Is there need for more accommodation of the following types in Lyminge Parish?**

***Tick (✓) more than one box if relevant***  
Person    1 2 3 4 5 6  
Private rented  
Local authority / housing association rented  
Owner occupied  
Shared ownership  
By virtue of employment (e.g. MOD/tied)  
Sheltered housing  
Adapted housing  
Restricted sale to local people  
Low cost sale  
Other – state below  
Comments:

**B44. Would you like to see further business development in the Parish?**

Person            1 2 3 4 5 6  
Yes  
No  
No opinion

***If you answered 'No' or 'No Opinion' go to B46.***

***Only a little way to go now.***

**B45. Which types of business development would you support in the Parish?**

***Tick (✓) more than one box if relevant***

Person 1 2 3 4 5 6

Shops and small businesses

Tourism

New Public Houses

Guest house/hotels

Conversion of redundant buildings

Light industrial

Workshops

Sheltered Workshops

Comments (***e.g. types of business that might be established.***):

**General**

**B46. Some of the local settlements currently lie in two parishes (e.g. Rhodes Minnis, Farthing Common, New Barn, Yew Tree Cross, Six Mile). If the parish boundary could be changed would this be an improvement?**

Person	1	2	3	4	5	6
Yes						
No						
No opinion						

Comments:

**B47. What do you view as the most important physical features of Lyminge Parish? (e.g. specific buildings, structures or natural features)**

Person  
1

2

3

4

5

6

**important single issue for the future of Lyminge Parish?**

Person  
1

2

3

4

5

6

**B48. What do you view as the most**

*That's it! You've finished. Thank you.*

**ONCE THE LAST MEMBER OF THE HOUSEHOLD HAS COMPLETED THE QUESTIONNAIRE PUT IT IN THE ENVELOPE PROVIDED & POST IT BY THURSDAY 31<sup>st</sup> MARCH.**

***If you have lost your envelope the return address is:  
Lyminge Parish Plan, Channel Business Centre  
Ingles Manor, Castle Hill Avenue, Folkestone  
Kent. CT20 2RD.***

**Appendix 3**

**MOST IMPORTANT ISSUES FACING LYMINGE PARISH**

**QUESTIONNAIRE**

SPECIFIC QUESTION		INDIVIDUAL QUESTION RESPONSES	
Road Safety	118	Leisure Facilities	1066
Limiting Development	86	Housing Development	1058
Maintaining Parish as it is now	82	Adequacy of Community Halls	1047
Community Spirit	75	NHS Adequacy	1038
Facilities / Services for young people	70	Council tax to meet needs of parish	1038
Maintaining & expanding shops & businesses	68	Importance of Churches	1033
Environmental Issues	38	Business Development	1032
Increased Development	36	Community Services	1029
Parking	33	Crime, Anti-Social Behaviour Concerns	1028
Public House Improvements	26	Health Services	1028
		Road Danger Spots	1027
<b>TOTAL NUMBER OF RESPONSES</b>	<b>804</b>	Response / Availability of Fire, Ambulance & Police Services	1027
		Parish Boundary	1023
		Local council publication of its decisions	1020
		Traffic Calming	1018
		Paths, Street Lighting, etc – desired features	1018
		Parking problems near respondents home	1008
		Method of hearing local council decisions and activities	988
		Desire to join Neighbourhood Watch scheme	979
		Needed Sports Facilities	960
		Reasons for Post Office Usage	960
		Improvements to the Environment	960
		Reasons for out of Parish shop usage	951
		Information Content	919
		Parking problems in central Lyminge	877
		Reasons for Parish shop usage	856
		Footpaths, Bridleways, etc. – Difficulties	833
		Public Transport Improvements	807
		Reception Difficulties	680
		Information Services	483
		Required Educational Facilities	452
		Public House Question	1017

## MOST IMPORTANT ISSUES FACING LYMINGE PARISH Continued

<b>Three Wishes</b>		<b>Roadshows</b>	
Traffic	146	Shops & Businesses	63
Facilities for Youth	139	Housing & Development	44
Shops & Businesses	87	Footpaths & Bridleways	36
Sport	79	General	33
Footpaths & Bridleways	78	Recycling	31
Environment	63	Traffic	25
Housing & Development	62	Sport	18
Litter	61	Parking	14
Public Transport	43	Public Transport	12
Roads & Drains	41	Litter	9
Education & Childcare	39	Local Councils	9
Lighting	37	Environment	6
Parking	37	Activities	5
<b>Policing</b>	26	Roads & Drains	4
Services	23	Services	3
Information Technology	20	Facilities for Youth	2
Recycling	15	Lighting	1
Local Councils	15	Village Hall	1
Activities	14	Lyminge Forest	0
Village Hall	9	Information Technology	0
Lyminge Forest	8	Education and Childcare	0
General	5		

## **MOST IMPORTANT ISSUES FACING LYMINGE PARISH Continued**

Equals Average Response from each column added together.

<b>Overall Interest</b>	
Road Safety / Parking	1169
Leisure / Community	1161
Development	1152
Street Furniture / Lighting / Roads / Drains	1060
<b>Crime, Anti-Social Behaviour Concerns &amp; Policing</b>	1054
Environmental Issues	1052
Public House Improvements	1043
Local Councils / Council Tax	1039
Health Services	1033
Churches	1033
Response / Availability of Fire, Ambulance & Police Services	1027
Parish Boundary	1023
Desire to Join Neighbourhood Watch Scheme	979
Post Office	960
Footpaths, etc	947
Information Content	919
Shop Usage	904
Public Transport	862
Information Services	602
Education / Childcare	491
Conservation	82
Other	24



**HOT TOPICS**

- Road safety in central Lyminge
- Speeding in the parish
- Limiting housing development
- Encouraging shop / business development
- Improved public house facilities in Lyminge village
- Improved sports and youth facilities
- Street environment issues
- No increases in council tax

**MOST IMPORTANT ISSUES**

- The top ten from 804 responses:
  1. Road safety (118)
  2. Limiting development (86)
  3. Maintaining the parish as it is now (82)
  4. Community spirit (75)
  5. Facilities / services for young people (70)
  6. Shops and businesses (maintaining and expanding) (68)
  7. Environmental issues (38)
  8. Extra development required (36)
  9. Parking (33)
  10. Public house improvements (26)

**Appendix 6**  
**COLOURED BROCHURE**

## TRAFFIC MANAGEMENT, ROAD SAFETY AND PARKING

### On-Road Parking

<b>Parking near respondents home</b>	<b>Number</b>
<b>Percentage of respondents</b>	
Cars parking on pavement	231
26.3%	
Commercial vehicle parking	129
14.7%	
Nowhere to park	74
8.4%	
Cars blocking resident's entrance	170
19.4%	
No problems	604
68.9%	

### Main Comments

- Main problems locations – Mayfield Road (41), Station Road (41), Canterbury Road (23), High Street (19), Church Road (17)
- Mayfield Road – too many vehicles causes problems
- Canterbury Road / Station Road – parking next to shops causes problems

**TRAFFIC MANAGEMENT, ROAD SAFETY AND PARKING**

**Traffic Calming**

<b>1018 Respondents</b>	<b>Order</b>	<b>Average Response by Question Respondents</b>
New speed limit zones	3	2.88
Extension of speed limit zones	5	2.64
Road humps	8	2.21
Extension to no parking zones	6	2.35
Increased on-road parking	10	1.85
“Gated entrances” to settlements	9	2.04
Traffic lights	11	1.67
Zebra crossing	2	2.93
Flashing speed indicator board	1	3.04
Frequent police speed checks	4	2.75
Other	7	2.23

**Appendix 7b**

**TRAFFIC MANAGEMENT, ROAD SAFETY AND PARKING**

**Danger Spots**

	<b>Number</b>	<b>Percentage</b>
Yes	801	65.5%
No	123	10.1%
No opinion	103	8.4%
No response	196	16.0%
Total	1223	100.0%

Majority identify Station Road / Canterbury Road especially in the area of the Post Office.

**Appendix 7c**

**TRAFFIC MANAGEMENT, ROAD SAFETY AND PARKING**

**Off-Road Parking**

<b>Parking problems in central Lyminge</b>	<b>Number</b>	<b>Percentage of question respondents</b>
Often	286	32.6%
Occasionally	406	46.3%
Never	185	21.2%

**Main Comments**

- Car park often full
- Local workers parking caused difficulties for others
- People should be encouraged to walk

**TRAFFIC MANAGEMENT, ROAD SAFETY AND PARKING**

**Fire & Ambulance**

<b>1027 Respondents</b>	<b>Number using service</b>		<b>Number not using service</b>		<b>No response</b>		<b>Average response of respondents using service *</b>
Fire	279	22.8%	658	53.8%	286	23.4%	1.45
Ambulance	388	31.7%	577	47.2%	258	21.1%	1.59
Hospital Transport	209	17.1%	719	58.8%	295	24.1%	1.29

\* 2 -> Good 0 -> Poor

General satisfaction with services. Comments express some concern about access to particular addresses (e.g. Mayfield Road, Rectory Lane, North Lyminge, Kimberley Terrace).

## **HIGHWAY MATTERS**

### **Pavements and Public Rights of Way**

#### **Main Comments**

- More street lighting at Brady Road, Tayne Field, footpath between Palm Tree Way and Church Road.
- More pavements – around the shops and on Brady Road.
- Pelican crossing – near shops on Canterbury Road and near shops and Age Concern on Station Road.
- Cycle paths – adjacent to the Canterbury to Folkestone Road and along old railway line.
- More footpaths – Broadstreet and Meriden Park to Orchard Garage / North Downs Way.



## **HIGHWAY MATTERS**

### **Pavements and Public Rights of Way**

**Footpaths, Bridleways, etc - Difficulties** (Respondents could make more than one response)

	<b>833 Respondents to question</b>	<b>Percentage of question respondents</b>
Obstructions	170	20.4%
Animals	79	9.5%
High stiles	153	18.4%
Mud / water	359	43.1%
Crops across path	116	13.9%
Other users	26	3.1%
Bushes / nettles	258	31.0%
Lack of signposts	124	14.9%
Crossing roads	188	22.6%
Other	49	5.9%
No difficulties	193	23.2%

**HIGHWAY MATTERS**

**Pavements and Public Rights of Way**

**Main Comments about Footpaths, Bridleways, etc**

- Lots of comments about mud and water. These seem to have no solution except in the more urban areas (e.g. the footpath to the north of the parish church, Ethelburga Grove, footpath from Brady Road to Silverlands Estate).
- Nettles on footpath alongside Lyminge Methodist Church and Nailbourne Court to High Street, Lyminge.
- Crossing roads across Canterbury Road to North Lyminge and Church Road, Lyminge.
- Obstructions:
  - Stiles too high and not dog friendly
  - Dog excrement
  - Crops across paths

**HIGHWAY MATTERS**

**Pavements and Public Rights of Way**

<b>1018 Respondents to question (Respondents could make more than one response)</b>	<b>Number</b>	<b>Percentage of questions respondents</b>
Cycle paths	250	24.6%
More pavements	411	40.4%
More street lights	456	44.8%
More footpaths	213	20.9%
Pelican crossings	281	27.6%
Dropped kerbs	90	8.8%
Traffic islands	101	9.9%
None of the above	182	17.9%

**HIGHWAY MATTERS**

**Environment**

**Flooding and Storm Damage**

<b>Households with flooding problems / storm damage problems</b>	<b>Number</b>	<b>Percentage</b>
Many problems	5	1%
Few problems	57	9%
No problems	533	85%
No response	32	5%
Total	627	100%

- 10% have some problems.
- Comments suggest that flooding is a problems which may be due to a lack of gully cleaning.

## **VISITORS' VIEWS OF LYMINGE PARISH**

- 22 out of 200 questionnaires were returned from visitors to Sibton Park Holiday Property Bond site. Thus, the visitors' questionnaire can only be thought of as a small study giving only an outline of the views of visitors to Lyminge parish. Perhaps a larger study can be carried out in the future as about 100 people a week visit Lyminge parish.
- The majority of visitors responding were retired.
- Visitors to Sibton Park come from all over the UK (and from abroad).
- Most groups stay for 1 week.
- It is hard to draw conclusions concerning visitors' views on parish facilities (because of the small numbers) except that their view on street cleaning was better than residents' views.
- It is hard to draw conclusions concerning visitors' views on information services (because of the small numbers). It does however seem that visitors were unaware of the pre-existing tourist information point and map near the Post Office. Visitors would also like to have a leaflet about the locality, better road signposting and even a tourist information centre.
- Visitor respondents seem to want heritage and environmental information and to a lesser extent information about arts facilities.
- Visitors' views on road safety issues seem less marked than residents' views.
- As over 35% of visitors responding came to Lyminge parish to walk on footpaths, it has to be noted that 14% found a lack of footpath signposts a problem. It should also be noted that 19% found no difficulties with the public rights of way.
- 19% of responding visitors would like to see more pavements in the parish. A site commented on several times was between Sibton Park and Yew Tree Cross.
- No visitors expressed a wish to see more housing or business development in Lyminge parish.
- Responding visitors seem to most value the surrounding countryside, the churches and the old buildings in the parish.

## Appendix 10

### CRIME, ANTI-SOCIAL BEHAVIOUR AND POLICING

#### Policing

1027 Respondents	Number using service		Number not using service		No response		Average response of respondents using service *
Police (emergency)	287	23.5%	645	53.7%	291	23.8%	0.98
Community Police	314	25.7%	615	50.3%	294	24.0%	0.90
Community Warden	210	17.2%	684	55.9%	329	26.9%	0.78

\* 2 -> Good 0 -> Poor

#### Main Comment

- Lack of visible policing in parish

## Appendix 10a

### CRIME, ANTI-SOCIAL BEHAVIOUR AND POLICING

#### Neighbourhood Watch Scheme

##### Desire to join Neighbourhood Watch Scheme

979 Respondents to question	Number	Percentage of question respondents
Yes	296	30.2%
No	416	42.5%
Already in it	267	27.3%

There is a desire for a significant number to join the Neighbourhood Watch Scheme, but we understand from the scheme that in the past this desire has not developed into people actually joining.

**CRIME, ANTI-SOCIAL BEHAVIOUR AND POLICING**

**Concerns about crime and anti-social behaviour**

<b>1028 Respondents Respondents could make more than one response</b>	<b>Number</b>	<b>Percentage of question respondents</b>
Burglary / theft	345	33.6%
Mugging	40	3.9%
Vandalism	518	50.4%
Drunkenness	90	8.8%
Littering	589	57.3%
Not concerned	218	21.2%
Other	56	5.4%

Main comments concerned litter (including dog fouling), groups of young people, vandalism and low levels of policing.

NB: Perception of crime is much higher than the actual crime rate.

**HOUSING DEVELOPMENT**

**Housing Type - Placement**

	<b>Number</b>	<b>Percentage of question respondents</b>
Number of respondents to question (Respondents could make more than one response)	352	
Percentage of supporters of development	151.1%	
Single dwellings in controlled locations	192	54.5%
Small groups of less than 19	170	48.3%
Carefully designed larger groups	36	10.2%
Conversion of redundant buildings	253	71.9%
Expansion on the edge of settlements	89	25.3%
Other	6	1.7%

**HOUSING DEVELOPMENT**

**Housing Type - Financial**

	<b>Number</b>	<b>Percentage of question respondents</b>
Number of respondents to question (Respondents could make more than one response)	268	
Percentage of supporters of development	115.0%	
Private rented	53	19.8%
Local authority / housing association rented	88	32.8%
Owner occupied	76	28.4%
Shared ownership	45	16.8%
By virtue of employment	10	3.7%
Sheltered housing	45	16.8%
Adapted housing	28	10.4%
Restricted to sell to local people	121	45.1%
Low cost sale	131	48.9%
Other	6	2.2%



## **COMMUNITY & LEISURE FACILITIES**

### **Shops**

- The main reasons cited for shopping within the parish were the wish to support the local shops and the need for 'last minute' items.
- The 213 comments made suggest that all the shops are valued, but the Post Office and the Pharmacy are the most valued.
- The main reasons cited for shopping outside the parish are choice, value and ease of parking.
- The Post Office is used for a wide range of services which are appreciated. The main uses are for postal services, vehicle tax payment and non-post office goods. The only criticisms made were on access, opening hours and some confusion as to what services are provided (i.e. passport services).

## **MOST IMPORTANT PHYSICAL FEATURES**

- The top ten from 1296 responses:
  1. St Mary and Ethelburga Church (331)
  2. The surrounding countryside (260)
  3. Tayne Field (146)
  4. Ethelburga's Well (68)
  5. Lyminge Forest (60)
  6. The whole of the parish (47)
  7. The shops (39)
  8. The Nailbourne (35)
  9. The old buildings (35)
  10. The library (34)

## **COMMUNITY HALLS**

- General average satisfaction 1.58 (2-> good, 0-> poor)  
(880 respondents expressing an opinion)
- Average adequacy of specific halls: (1-> yes, 0-> no)
  - Lyminge Village Hall 0.90  
(909 respondents expressing an opinion)
  - Etchingill Village Hall 0.95  
(505 respondents expressing an opinion)
  - Rhodes Minnis Village Hall 0.91  
(338 respondents expressing an opinion)
  - Lyminge Methodist Church Hall 0.89  
(566 respondents expressing an opinion)

**BUSINESS DEVELOPMENT**

**Business Type**

	<b>Number</b>	<b>Percentage of question respondents</b>
Number of respondents to question (Respondents could make more than one response)	657	
Percentage of supporters of development	138%	
Shops and small businesses	525	79.9%
Tourism	160	24.4%
New public houses	365	55.6%
Guest houses / hotels	180	27.4%
Conversion of redundant buildings	296	45.1%
Light industrial	140	21.3%
Workshops	170	25.9%
Sheltered workshops	107	16.3%

**BUSINESS DEVELOPMENT**

**Business Support**

<b>1023 Respondents</b>	<b>Number</b>	<b>Percentage of question respondents</b>
Yes	476	46.1%
No	406	39.3%
No opinion	150	14.5%

**SPORTS FACILITIES**

- Average satisfaction rating with existing facilities 0.46  
(537 respondents expressed an opinion – 2->good, 0-> poor)
  
- Requested sports facilities – 960 respondents – top 4 with average response  
(4-> high priority, 1-> no priority)
  - Skateboard park 2.92
  - Multi sports court 2.92
  - Tennis court 2.80
  - Swimming pool 2.61
  
- The average response by respondents suggests that a skateboard park, a multi sports court and tennis courts approach a medium priority.
  
- The area around Lyminge village hall is the most suggested site for new sports facilities, although there is some support for facilities in Etchinghill and on Tayne Field.

**RADIO AND TELEVISION RECEPTION**

**Reception Difficulties**

<b>680 Respondents (Respondents could make more than one response)</b>	<b>Number</b>	<b>Percentage of question respondents</b>
Radio	227	33.4%
Digital radio	112	16.5%
Terrestrial television	284	41.8%
Free view television	252	37.1%
Digital television	157	23.1%
Satellite television	45	6.6%
Mobile telephone	340	50.0%
Broadband internet	39	5.7%

**HEALTH, SOCIAL SERVICES AND EDUCATION**

**Health Services**

	<b>1028 Respondents</b>	<b>Average response of respondents expressing an opinion 2-&gt; good, 0-&gt; poor</b>
Social care		1.35
Dentist's surgery		1.68
Doctor's surgery		1.77
District nurse		1.83
Health visitors		1.52
Maternity care		1.68
Chiropody		1.56
Physiotherapy		0.89
Occupational Therapy		1.75
Alternative treatment		1.76
Counselling services		1.24
Loan of equipment		1.86

## **HEALTH, SOCIAL SERVICES AND EDUCATION**

### **NHS Adequacy**

<b>1038 Respondents</b>	<b>Number</b>	<b>Percentage of question respondents</b>
Yes	672	64.7%
No	209	20.1%
No opinion	157	15.1%

Comments show general satisfaction with local services, except:

- Lack of NHS Dentist
- Lack of woman GP
- Lack of weekend GP services

BUT there is much more concern with the hospital services in terms of facilities, service and accessibility.



## **HEALTH, SOCIAL SERVICES AND EDUCATION**

### **Requested Educational Facilities**

<b>452 Respondents (Respondents could make more than one response)</b>	<b>Number</b>	<b>Percentage of question respondents</b>
Mothers and toddlers	55	12.2%
Pre-school	58	12.8%
Childminders	60	13.3%
Full day childcare	76	16.8%
After-school clubs	154	34.1%
Holiday play scheme	185	40.9%
Adult education	311	68.8%
Other	12	2.7%

### **Main Comments:**

- School could be used out of hours for classes (e.g. IT room).
- Village halls could be used for adult education.
- Language classes and supervised youth activities have been suggested.

**ENVIRONMENT, INCLUDING ‘WALKING BUS’**

**Needed Improvements**

	<b>High Priority (4)</b>	<b>Medium Priority (3)</b>	<b>Low Priority (2)</b>	<b>No Priority (1)</b>	<b>Number of Responses</b>		<b>Average response by question respondents</b>
Improved doorstep recycling	509	239	54	30	832	68.0%	3.47
Improved recycling sites	264	254	80	58	656	53.6%	3.10
Energy saving	281	196	68	43	588	48.1%	3.22
Improved public transport	246	235	102	57	640	52.3%	3.05
Car sharing	58	124	145	147	474	38.8%	2.20
“Walking bus”	162	130	86	124	502	41.0%	2.66
Other	4	11	0	17	32	2.6%	2.06

**COMMUNITY SERVICES**

- Street support services
  1. Street cleaning – reasonable
  2. Gully cleaning – approaching poor
  3. Street lighting – reasonable
  4. Litter bins – reasonable
  5. Road gritting – approaching poor
- Rubbish and recycling services
  1. Refuse collection – reasonable
  2. Recycling service – reasonable
  3. Recycling site – reasonable
- Utility services – approaching good
- Public toilets – reasonable
- Flower displays – reasonable

## **PARISH COUNCIL FUNDING AND COMMUNICATIONS**

### **Council Tax**

- Preparedness to pay slightly higher council tax to meet needs of the parish:
  - Yes 24.0%
  - No 64.1%
  - No opinion 11.9%
- The majority of respondents think the council tax is too high already.
- There are respondents who are prepared to pay more council tax only if the money were used in the village.
- A greater proportion of council tax should be allocated to the parish.
- There were suggestions to look for grants and sponsorship to provide additional facilities, and more transparency in expenditures.

**PARISH COUNCIL FUNDING AND COMMUNICATIONS**

**Information**

<b>919 Respondents (Respondents could make more than one response)</b>	<b>Number</b>	<b>Percentage of question respondents</b>
Parish Council activities	530	57.7%
Planning applications	506	55.1%
Local interest	673	73.2%
Local heritage	453	49.3%
Local environment	553	60.2%
Leisure	452	49.2%
Local arts	346	37.6%
Local sports	330	35.9%
Other	11	1.2%

**Main Comments**

- High quality of LNL – additional requested information included details of farmers markets, criminal acts and the library.

**PARISH COUNCIL FUNDING AND COMMUNICATIONS**

**Publication of Decisions and Activities**

- How well does the local council publicise its decisions?
  - Reasonably well 50.1%
  - Poorly 30.5%
  - No opinion 13.5%
  - Very well 5.9%
- Many positive comments about the Parish Council newsletter.
- Monthly summary as Parish Council newsletter is appreciated, but there were also suggestions to make better use of the newsletter.
- Information concerning the District Council activities is considered as poor.
- Applications for planning permission should be publicised.

**PARISH COUNCIL FUNDING AND COMMUNICATIONS**

**Information**

<b>483 Respondents (Respondents could make more than one response)</b>	<b>Number</b>	<b>Percentage of question respondents</b>
Notice board	227	47.0%
Tourist information point	112	23.2%
Map	284	58.8%
Signposts	252	52.2%
Brown tourist signs	157	32.5%
Other	45	9.3%

Most requested information facilities already exist.

**TRANSPORT**

**Public Transport Improvements**

<b>807 Respondents (Respondents could make more than one response)</b>	<b>Number</b>	<b>Percentage of question respondents</b>
Bus shelters	137	17.0%
Routes	88	10.9%
Timetables	216	26.8%
Fares	203	25.2%
Reliability	114	14.1%
Location of bus stops	32	4.0%
Disability access	62	7.7%
Improved taxi service	83	10.3%
No opinion	364	45.1%

## Appendix 22a

### TRANSPORT

#### Roadworthy Vehicles in Household

	Number	Percentage	Average Number Per Household
Bicycles	547	37%	0.87
Cars	832	56%	1.33
Vans	54	4%	0.09
Motorbikes	38	3%	0.06
Specially adapted vehicles	9	1%	0.01
Lorries	15	1%	0.02
Total	1495	100%	

- Mostly cars, but almost 1 bicycle per household.

## Appendix 22b

### TRANSPORT

#### Public Transport Usage

- Most people do not use public transport.
- But:
  - 8.9% of respondents use a bus everyday
  - 2.3% of respondents use a train everyday
  - 5% of respondents use a taxi/private hire everyday

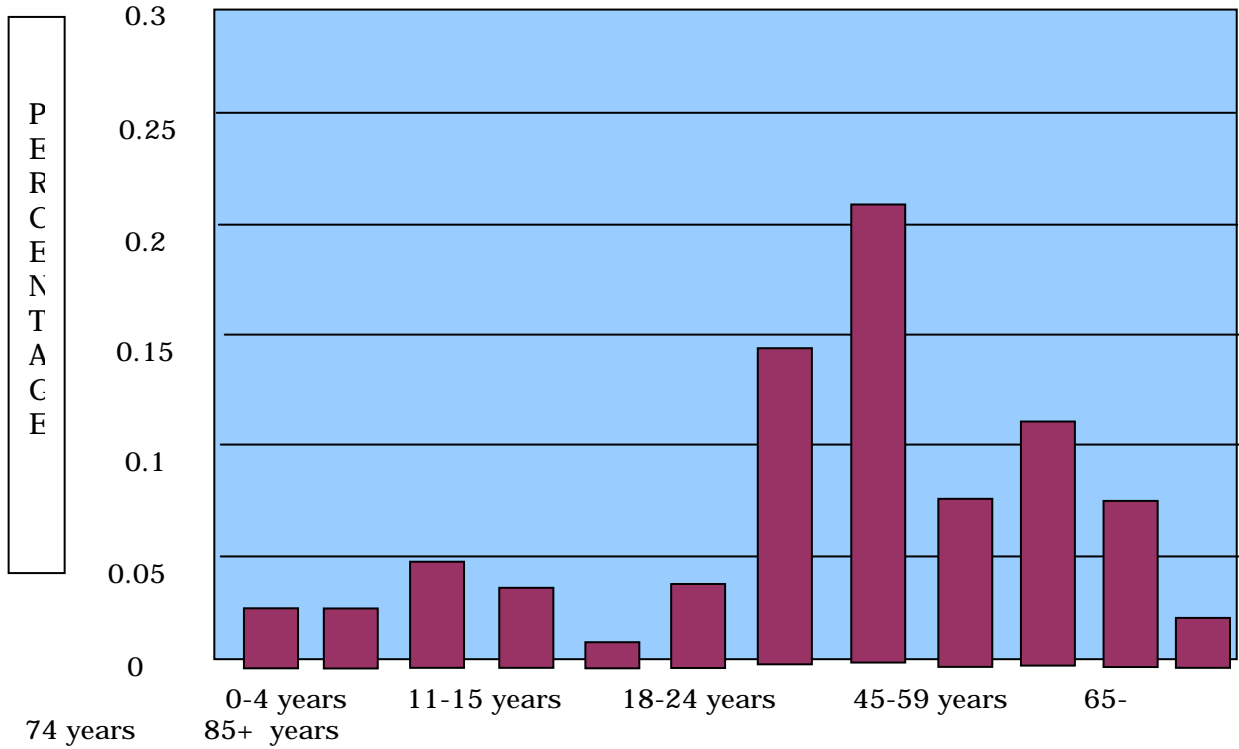
**HOUSEHOLDS**

<b>Questionnaire Household Response Rate by Area</b>	<b>Number of Households Responding</b>	<b>Percentage of Responders</b>
Number of Questionnaires Delivered - 1224		
Lyminge	494	78.8%
Etchinghill	102	16.3%
Rhodes Minnis	12	1.9%
Outlying areas	16	2.6%
Unknown	3	0.5%
Total	627	100.0%



## AGE DISTRIBUTION

### Lyminge Parish Age Distribution



This is comparable with the 2001 census results which do not show information about the whole parish, rather Lyminge village, Tolsford ward and North West Downs ward.

**POPULATION**

**Movement out of the Parish**

<b>Movement Out of the Parish in Last 5 years</b>	<b>Number</b>	<b>Percentage</b>
Yes	75	12%
No	501	80%
No response	51	8%
Total	627	100%

Movement rate from the parish is not remarkable. (2001 census showed that 11% of national population had moved in previous year.) Reasons given for movement were many. Only a few cited housing costs as a cause (3.29).

**TIME LIVED IN PARISH**

<b>Number of Respondents to question old</b>	<b>1146</b>	<b>Total number of Respondents to questionnaire &gt;10 years</b>
--	-------------	--

	<b>Number</b>	<b>Percentage of question Respondents</b>
Less than 1 year	66	5.8%
1 - 5 years	240	20.9%
6 - 15 years	336	29.3%
16 - 25 years	212	18.5%
26 - 50 years	210	18.3%
51+ years	30	2.6%
Whole life	52	4.5%

The majority of residents live in the parish for a long time.

## Appendix 27

### NATURE OF OCCUPATION

	Number	Percentage of Question Responders
Professional	288	25.3%
Clerical	80	7.0%
Skilled manual	83	7.3%
Manual	18	1.6%
Shop work	26	2.3%
School / College	113	9.9%
Home maker	61	5.4%
Retired	411	36.1%
Unemployed	10	0.9%
Other	49	4.3%
Number of respondents to question	1139	100.0%

## Appendix 28

### PLACE OF OCCUPATION

- 63% work within Shepway
- 34% work in Lyminge Parish
  - Paid work 15.3%
  - Retired 11.8%
  - Home maker 5.6%
  - School 1.3%
  - Unemployed 0.1%

The majority of residents work locally. The high proportion of home workers seems to follow a national trend.

**CHURCHES**

<b>1033 Respondents Respondents could make more than one response</b>	<b>Number</b>	<b>Percentage of Question Responders</b>
For worship	307	29.7%
For private prayer	170	16.5%
For baptisms, weddings and funerals	481	46.6%
For pastoral support	154	14.9%
To visit graves / war memorial	186	18.0%
As focal points for the community	447	43.3%
As historic buildings	634	61.4%
Every place should have one	388	37.6%
To use grounds as public space	66	6.4%
Other	17	1.6%
No importance	136	13.2%

## **Appendix 30**

### **LIBRARY**

- General average satisfaction – 1.64 (2-> good, 0-> poor)  
(880 respondents expressed in opinion.)
- There is satisfaction with the library.

## **Appendix 31**

### **CHILDREN'S PLAY AREAS, LYMINGE FOREST, TAYNE FIELD**

- Children's play areas
  - General average satisfaction – 0.94 (2-> good, 0-> poor)  
(612 respondents expressed an opinion)
- Lyminge Forest
  - General average satisfaction – 1.39 (2-> good, 0-> poor)  
(742 respondents expressed an opinion)
- Tayne Field
  - General average satisfaction – 1.43 (2-> good, 0-> poor)  
(663 respondents expressed an opinion)

**LOCAL GOVERNMENT PARISH BOUNDARY**

- Should the parish boundary be inclusive of complete settlements?
  - 1023 respondents gave the following responses:

No opinion	68.3%
No	19.5%
Yes	12.2%

- This was the general trend from respondents from Lyminge, Etchinghill and the outlying areas, BUT the respondents from Rhodes Minnis responded as follows:

No opinion	43.5%
Yes	39.1%
No	17.4%

- Comments suggested that inclusion of complete settlements in one parish would provide scope for development and would mean equal priority to each area.
- Some suggested that the whole of Rhodes Minnis should be in one parish.

## DIRECTORY OF USEFUL PARISH TELEPHONE NUMBERS AND EMAIL ADDRESSES

<b>Title</b>	<b>Name</b>	<b>Telephone Number</b>	<b>Email</b>
Community Warden	Garry Harrison	07977 982 185	
Community Police Officer	Trevor Moody	01303 850055 07980 770582	<a href="mailto:Trevor.moody@kent.pnn.police.uk">Trevor.moody@kent.pnn.police.uk</a>
Parish Clerk	Jenny Maxted	01227 709109	<a href="mailto:lymingeclerk@aol.com">lymingeclerk@aol.com</a>
Chair to the Parish Council	Derrick Hammer	863182	
Vice Chair to the Parish Council	Patsy Philip	862983	
Chair Finance Committee	Glenn Floyd	862732	
Lyminge School	School Office	862367	
Lyminge Pre-School Play Group	Information	862831	<a href="mailto:lymingepreschool@aol.com">lymingepreschool@aol.com</a>
Etchinghill Pre-School Play Group	Information	862803	
Lyminge Association	Information	862699	
Etchinghill Residents Association	Information	863918	<a href="mailto:davidr@hotmail.com">davidr@hotmail.com</a>
Lyminge Newsletter	Information	862488	<a href="mailto:Jean.howard@btinternet.com">Jean.howard@btinternet.com</a>
New Lyminge Doctors Surgery	Reception	863160	
Church Road Doctors Surgery	Reception	862109	
Vet	Information	251253	Held at Methodist Hall
Chemist	Counter	862425	

Post Office	Counter	862201	
Lyminge Village Hall	Bookings	862044	
Etchinghill Village Hall	Bookings	862172	
Methodist Hall	Bookings	863039	
Sibton Park Cricket Pavilion Club	Bookings	862366	
Lyminge Bowls Club	Bookings & Information	863495	<a href="mailto:wendypreston@etchinghill.org.uk">wendypreston@etchinghill.org.uk</a>
Rhodes Minnis Village Hall	Bookings	862060	
Age Concern	Information	Everest Court 862364	<a href="mailto:Acer.information@virgin.net">Acer.information@virgin.net</a>
Lyminge Church	Information	862345/862432	
Lyminge Methodist Church	Information	266281	
Rhodes Minnis Methodist Church	Information	862281	
Scouts	Information	862036	
Guides	Information	862699	
Cubs	Information	862211	
Brownies	Information	862073	
Beavers	Information	863177	
Rainbows	Information	863714	
<b>Library</b>	Reception	862180	<b>A list of all clubs and societies with contact numbers is held in the library</b>



## FUTURE PARISH CHALLENGES

Future Parish Challenges	
<ol style="list-style-type: none"> <li>1. Road safety and parking</li> <li>2. Leisure and community</li> <li>3. Development</li> </ol>	<p>These represent issues in ranking order from the three wishes, road shows and the parish questionnaire. They indicate the importance given by parishioners in the various categories. This shows that some important issues may be performing well, for instance schools, and therefore score lower in importance.</p>
<ol style="list-style-type: none"> <li>4. Street furniture, lighting, roads and drains</li> <li>5. Crime, anti-social behaviour concerns and policing</li> <li>6. Environmental issues</li> <li>7. Public house improvements</li> <li>8. Local councils and council tax</li> <li>9. Health services</li> <li>10. Churches</li> <li>11. Response and availability of fire, ambulance and police services</li> <li>12. Parish boundary</li> </ol>	<ol style="list-style-type: none"> <li>13. Desire to join neighbourhood watch scheme</li> <li>14. Post Office</li> <li>15. Footpaths</li> <li>16. Local information</li> <li>17. Shop usage</li> <li>18. Public transport</li> <li>19. Information services</li> <li>20. Education and childcare</li> <li>21. Maintaining the status quo</li> <li>22. Other</li> </ol>